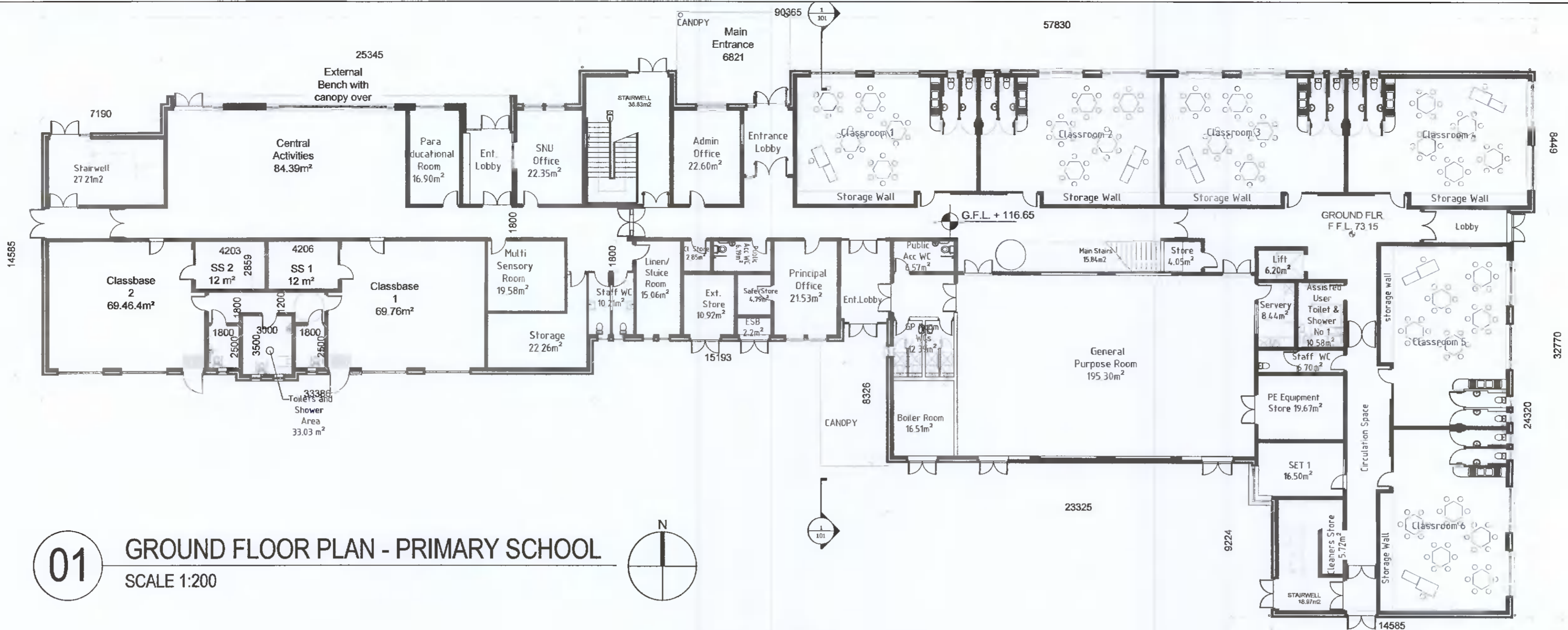
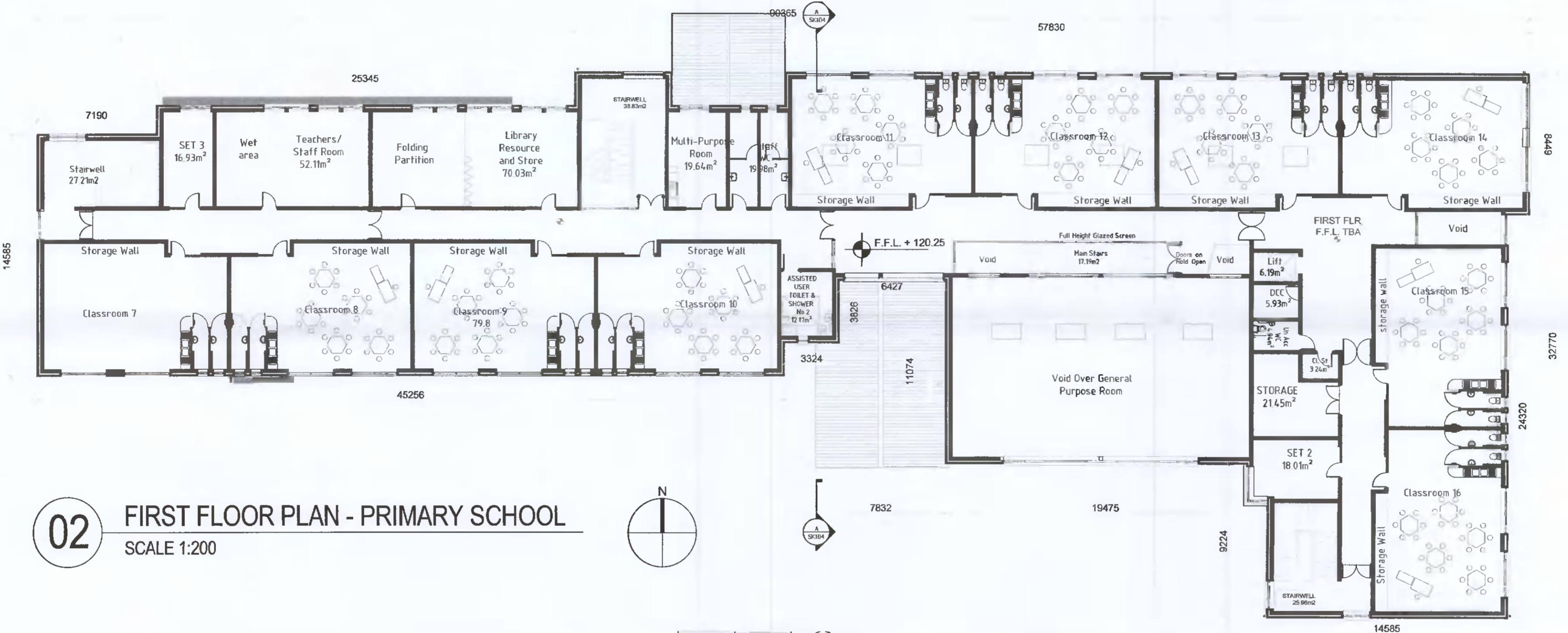


DO NOT SCALE FROM THIS DRAWING. USE FIGURED DIMENSIONS IN ALL CASES. VERIFY DIMENSIONS ON SITE AND REPORT ANY DISCREPANCIES TO THE ARCHITECT IMMEDIATELY. THIS DRAWING IS TO BE USED IN CONJUNCTION WITH THE ARCHITECT'S SPECIFICATION. © THIS DRAWING IS COPYRIGHTED AND MAY ONLY BE REPRODUCED WITH THE ARCHITECT'S PERMISSION.

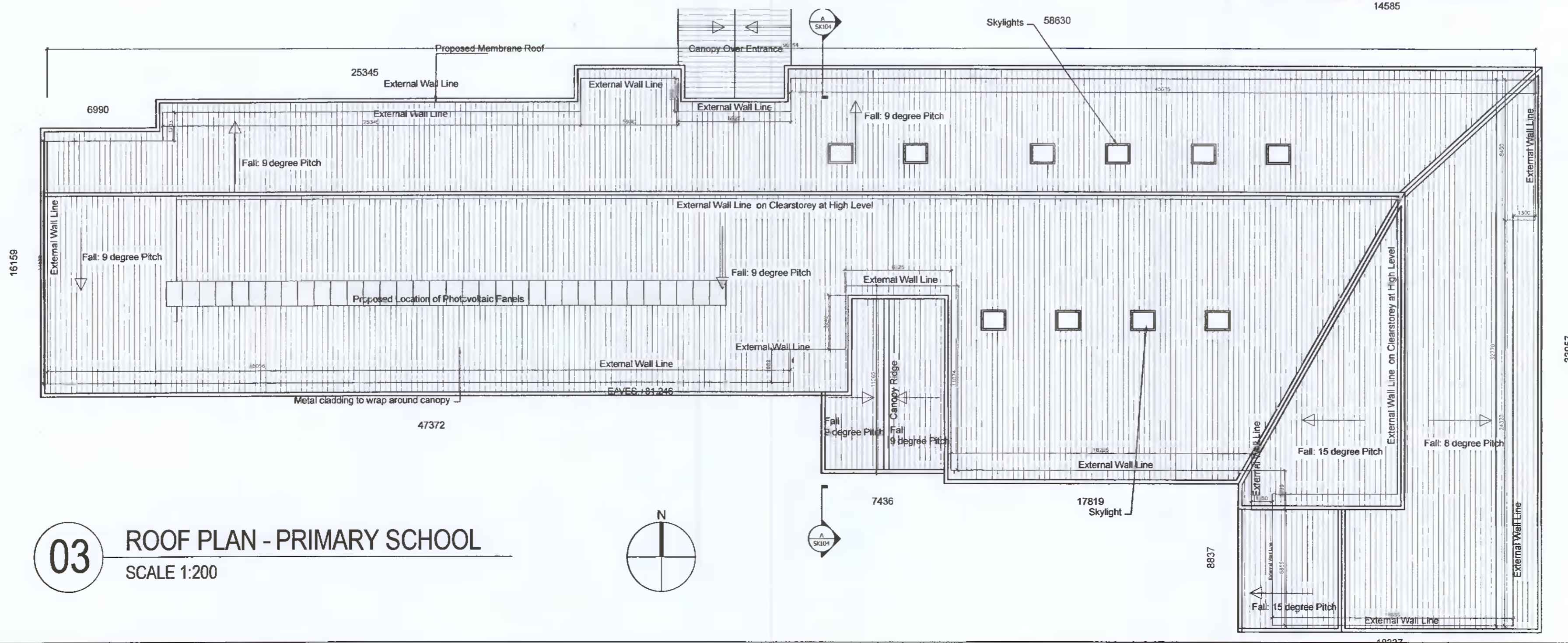
NOTES



01 GROUND FLOOR PLAN - PRIMARY SCHOOL
SCALE 1:200



02 FIRST FLOOR PLAN - PRIMARY SCHOOL
SCALE 1:200



03 ROOF PLAN - PRIMARY SCHOOL
SCALE 1:200

ORIGINAL SHEET SIZE = A1

PO1	2019.12.13	TH	Issued for Planning
REV	DTE	DRN	ISSUE

reddyarchitecture+urbanism

Reddy Architecture + Urbanism
Cork Office
1 Douglas Business Centre, Cangaire Road, Douglas, Co. Cork

T: +353 (0)21 486292
W: www.reddyarchitecture.com
E: cork@reddyarchitecture.com

3.0 PLANNING

JOB
Proposed Schools Campus,
Fortunestown Lane, Saggart, Co. Dublin

CLIENT
Department of Education and Skills

DRAWING
Primary School
Floor Plans

DATE	2019.12.13	SCALE	1:200@A1
DRN.	TH	CHECKED	TH

JOB NO. DWG NO. REVISION
P19-073K-RAU-04-ZZ-DR-A-31510 P01