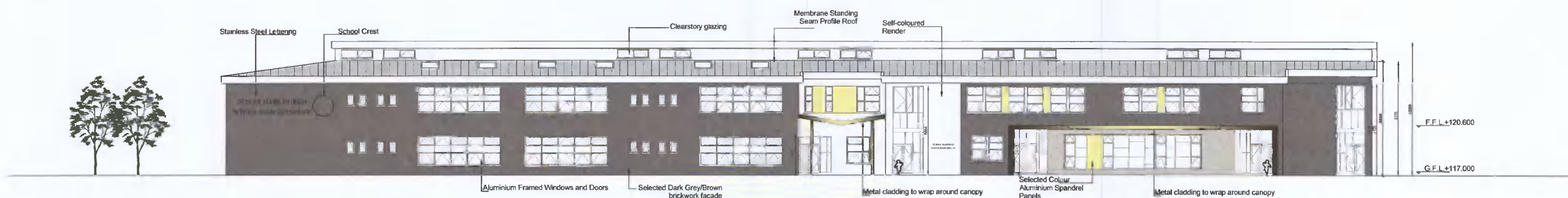


DO NOT SCALE FROM THIS DRAWING. USE FIGURED DIMENSIONS IN ALL CASES. VERIFY DIMENSIONS ON SITE AND REPORT ANY DISCREPANCIES TO THE ARCHITECT IMMEDIATELY. THIS DRAWING TO BE READ IN CONJUNCTION WITH THE ARCHITECT'S SPECIFICATION. © THIS DRAWING IS COPYRIGHT AND MAY ONLY BE REPRODUCED WITH THE ARCHITECT'S PERMISSION.

NOTES



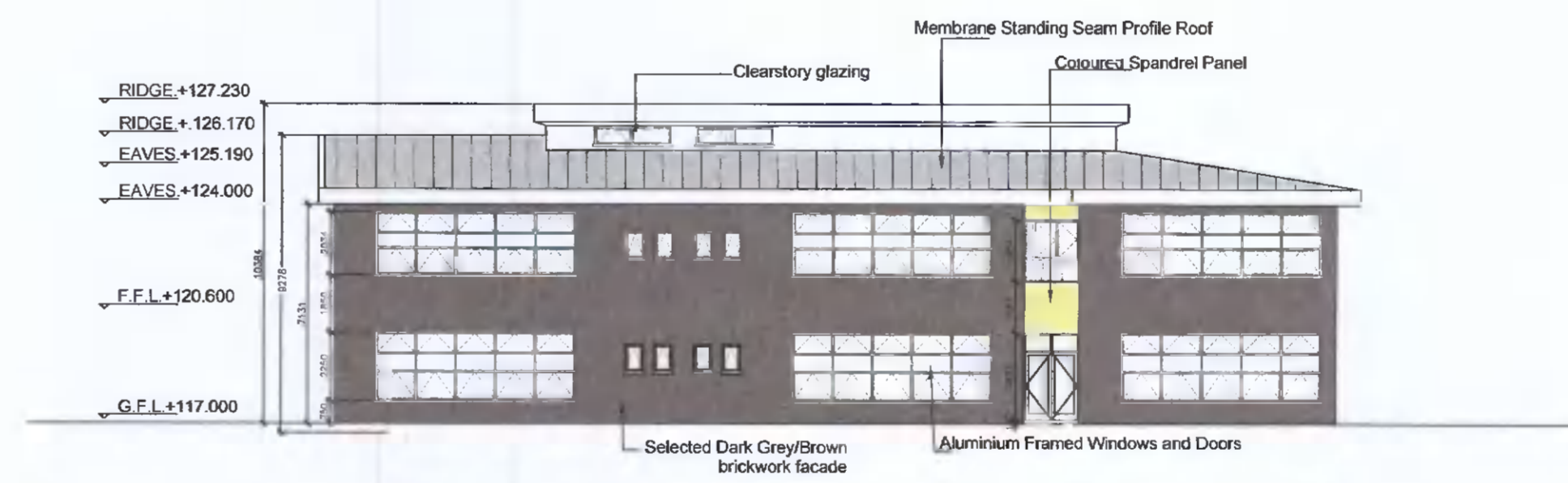
01 SOUTH ELEVATION - PRIMARY SCHOOL
SCALE 1:200



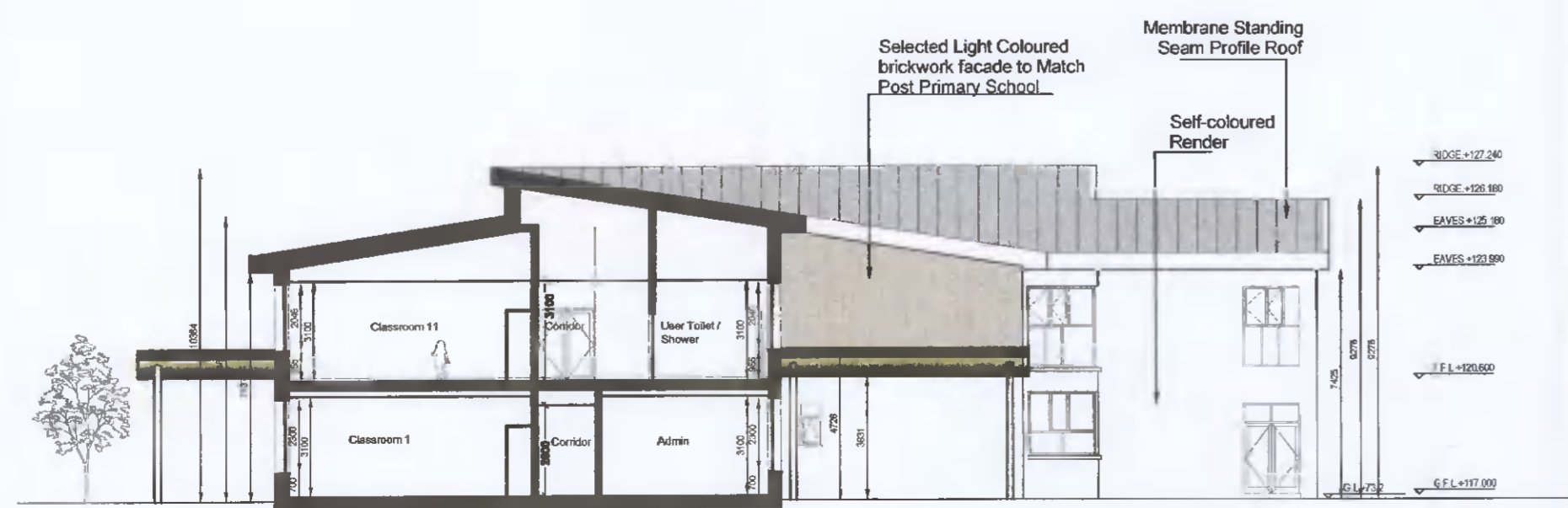
02 NORTH ELEVATION - PRIMARY SCHOOL
SCALE 1:200



03 WEST ELEVATION - PRIMARY SCHOOL
SCALE 1:200



04 EAST ELEVATION - PRIMARY SCHOOL
SCALE 1:200



05 SECTION AA - PRIMARY SCHOOL
SCALE 1:200

REV	DTE	DRN	ISSUE
P01	2019.12.13	TH	Issued for Planning

reddy architecture + urbanism

Reddy Architecture + Urbanism
Clark Office,
Douglas Business Centre, Camogie Road, Douglas, Co. Cork

T: +353 (0)21 4362922
W: www.reddyarchitect.com
E: cork@reddyarchitecture.com

3.0 PLANNING

JOB
Proposed Schools Campus,
Fortunestown Lane, Saggart, Co. Dublin

CLIENT
Department of Education and Skills

DRAWING
Proposed Elevations

DATE	2019.12.13	SCALE	1:200@A1
DRN	TH	CHECKED	TH

JOB NO. DWG NO. REVISION
P19-073K-RAU-04-XX-DR-A-33210 P01